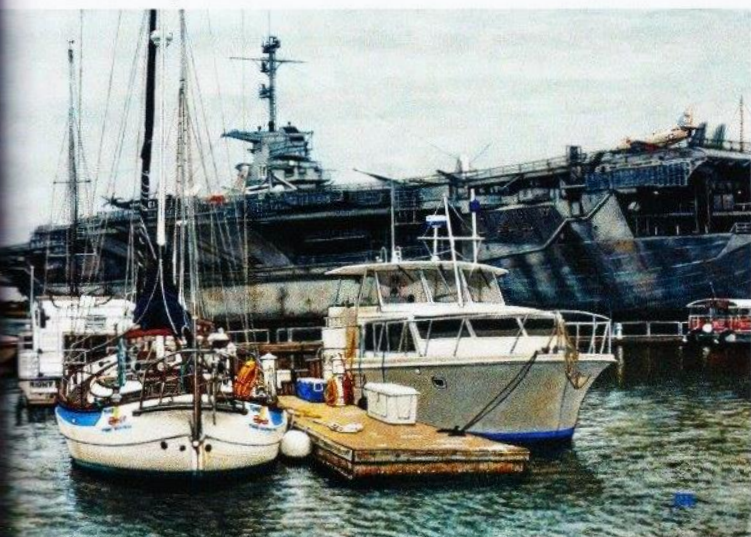
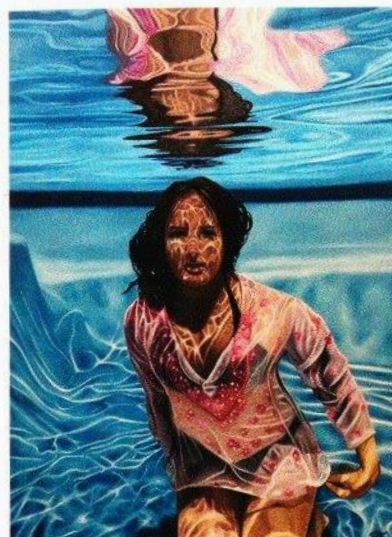


International Presence

Nearly 100 paintings will be on display during International Guild of Realism's 14th annual Juried Exhibition.



1



2

1
Andy Reinhardt,
Charleston Harbor,
oil on board, 24 x 36"

2
Priscilla Nelson,
Tapestry, oil on canvas,
40 x 30"

3
George A. Gonzalez,
Peaches In Blue Tin,
oil on panel, 16 x 20"

The International Guild of Realism is an organization dedicated to promoting the best in contemporary realistic artwork by artists across the world. As part of its continued support, for the past 13 years the group has hosted juried exhibitions around the United States to showcase available paintings by some of its members. This year's 14th annual *Juried Exhibition* will return to Principle Gallery in Alexandria, Virginia, which previously had the opportunity to host the group's 10th edition of the show.

"Since hosting a very successful IGOR exhibition in 2015, the artists in the guild have only improved. When we were approached to hold the exhibition again, I was more than happy to oblige," says Clint Mansell, director of Principle Gallery. "Their roster boasts many outstanding artists from around the world, working in a diverse array of mediums. We can't wait for this





4



5



6



7

awesome grouping of almost 100 works to kick off our fall exhibitions schedule."

The exhibition not only has a diversity in medium, but the 89 artists participating also create art in a range in subject matter. There will be landscapes, cityscapes, figurative works, seascapes, still lifes, wildlife and even Western paintings to captivate collectors of all interests. Among the artists who have been selected for the show are Andy Reinhardt, Barbara A. Walker, Brenda Morgan, Carin Wagner, Cat Corcilus, Cher Pruys, Cristy Dunn, George A. Gonzalez, Jeff George, John Schaeffer, Marianna Foster, Mike Briscoe, Patricia McMahon Rice, Priscilla Nelson, Richard Ginnett, Stuart Dunkel, Suzanne Lago Arthur, Tammy Liu-Heller and Tom Fuller.

Included in the exhibition is Reinhardt's maritime painting *Charleston Harbor*. "When looking for art subjects, I'm most struck when a scene has compelling colors, light and shadow, architectural elements



8

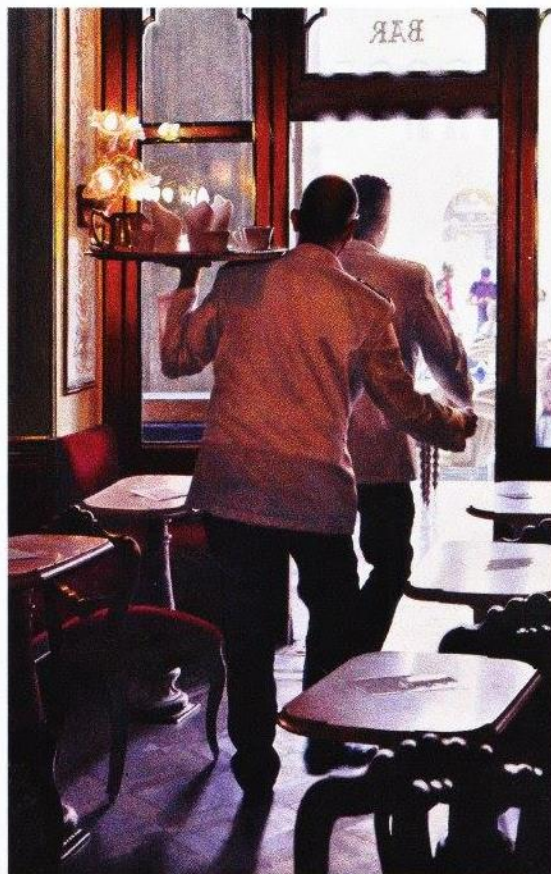
and composition or complexity that naturally or accidentally all present themselves together," he says. "When coming across this scene, I found all of these elements and was inspired to attempt to re-create them in a painting."

Rice's juried work, *Laird of the Manor*, is an oil on copper that was inspired by a bird that she kept seeing near her

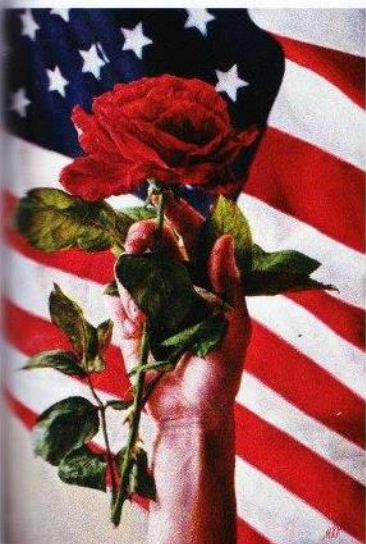
home. Elaborating, she explains, "This red-shouldered hawk had been hanging around our neighborhood for some time, but always too high for good reference photos. Then, one day, I caught him on the tangled branches of a fallen tree with a lush green background. He was surveying the scene as if he was the laird of the manor."



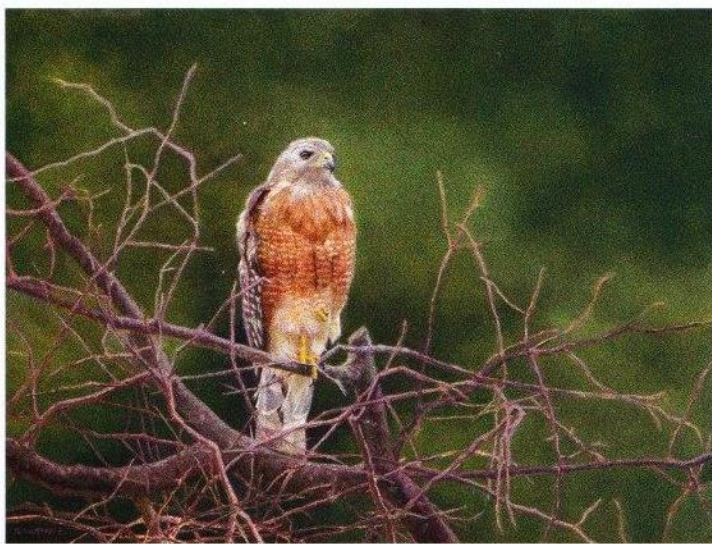
9



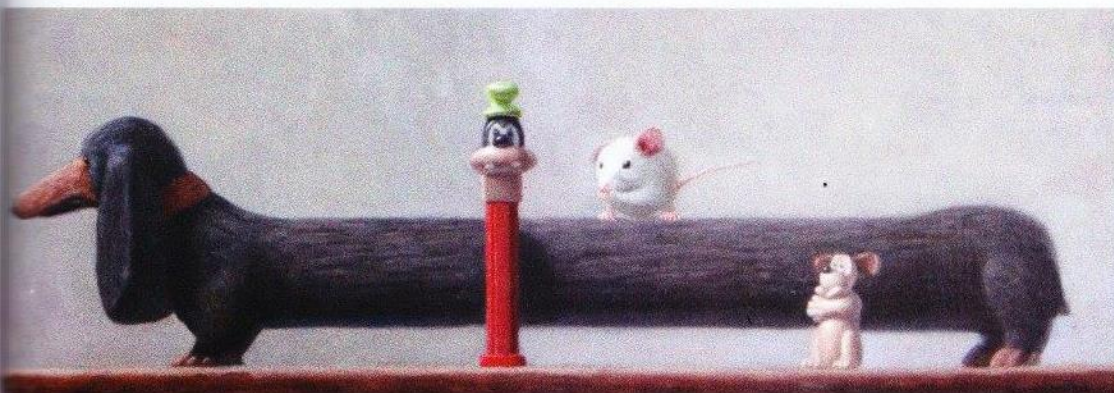
10



11



12



13

4
John Schaeffer, *Little Black Dress*, acrylic, 16 x 40"

5
Suzanne Lago Arthur, *Abby in Contemplation*, oil on linen mounted on dibond panel, 24 x 17"

6
Jeff George, *Death Row*, colored pencil, 15 x 12"

7
Cher Pruys, *1957 Chevrolet Bel Air*, acrylic, 9 x 7"

8
Richard Ginnett, *Marina*, oil on canvas, 12 x 24"

9
Carin Wagner, *Partially Obscured*, oil on linen, 20 x 20"

10
Mike Briscoe, *Dancing Waiters 2*, oil on panel, 19 x 12"

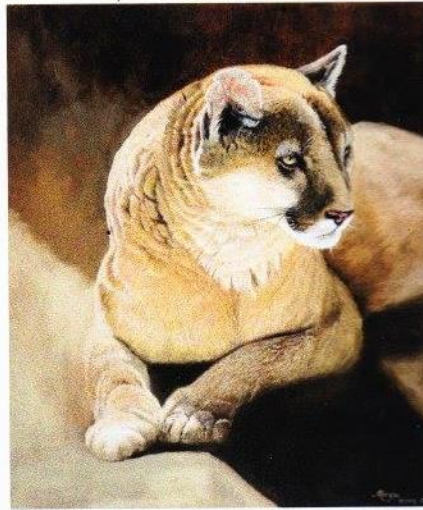
11
Marianna Foster, *The Beautiful*, oil on wood board, 16 x 12"

12
Patricia McMahon Rice, *Laird of the Manor*, oil on copper, 18 x 24"

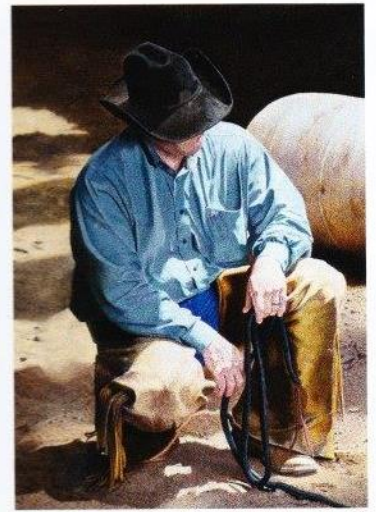
13
Stuart Dunkel, *Family Portrait: Troubled Child*, oil on panel, 7 x 20"



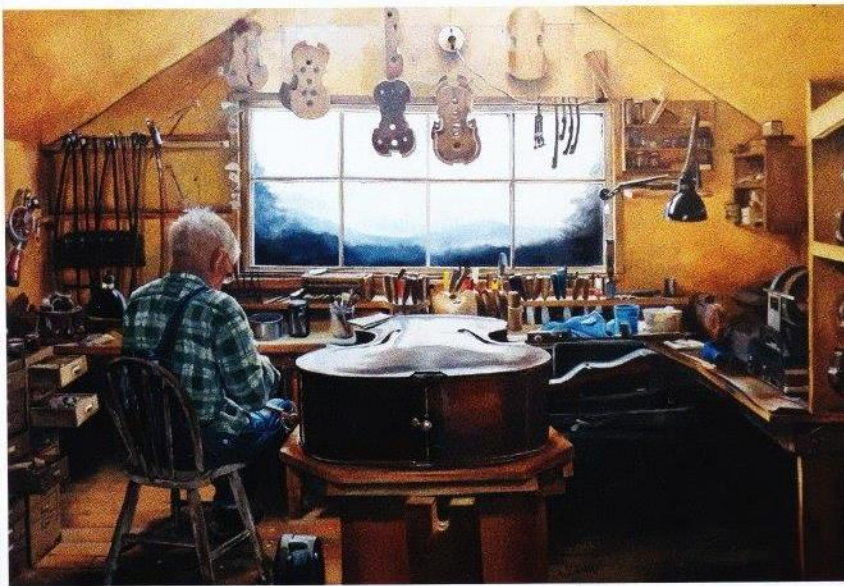
14



15



16



17



18

One of Nelson's favorite things to do in her underwater paintings is capture "the movement created by light as it is dispersed by water." In her painting for the show, *Tapestry*, the figure's "stillness is obvious," Nelson explains, "yet there is quite a bit of movement in the piece because of the light reflections."

Fuller has a lifetime working as a Western and equine painter, with his juried piece *Silence of a Whisper* fitting that bill. The painting, he says is of "That moment of bond and trust between cowboy and horse."

The 14th annual *Juried Exhibition* will run September 20 through October 15, with a reception taking place at Principle Gallery on opening night from 6:30 to 9 p.m. ●



19

14
Tammy Liu-Haller,
The Hardest Worker,
graphite,
12 x 12"

15
Brenda Morgan,
Warm Shadows, oil,
24 x 10"

16
Tom Fuller,
Silence of a Whisper, oil,
34 x 24"

17
Cristy Dunn,
The Fiddle Maker II, oil on
panel, 24 x 36"

18
Cat Corcilus,
Passion, oil,
12 x 12"

19
Barbara A. Walker,
Time Passages,
acrylic on
canvas,
23 1/4 x 41 1/4"