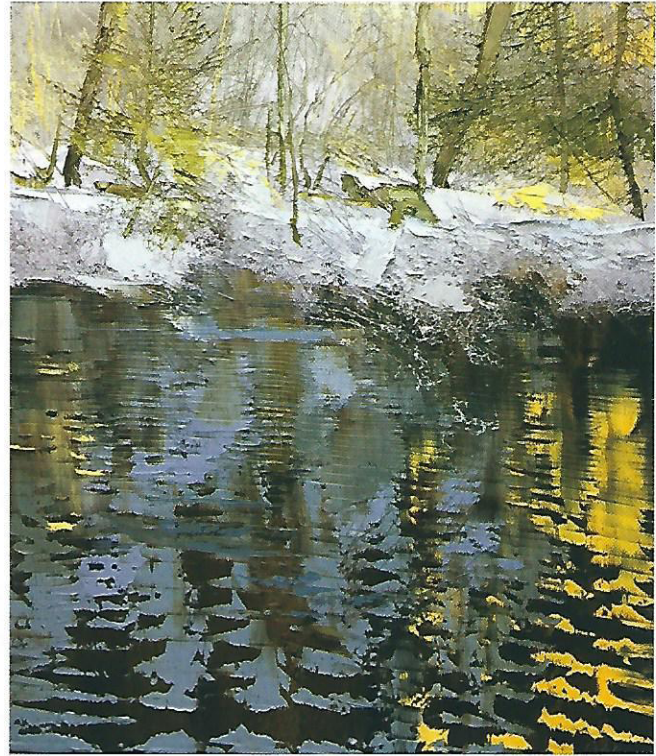


1



2

LYNN BOGGESS

One with the elements

When painter Lynn Boggess is outside his studio, he says he feels as if a weight is lifted off his chest, as he finds it easier to breathe. He chooses the locations he'll capture in his oil on canvas landscape works based on the mood he is experiencing, scoping out terrain on his 120-acre track of land in the Appalachian forest of West Virginia to reflect heroic or introspective emotions. He creates his own equipment to allow him to better execute his large-scale plein air paintings, some spanning more than 6 feet tall and 5 feet wide, including a heavy easel to support the canvas, umbrellas, stools and a trailer that allows him to set up shelter while he's working.

"The life of the work takes on a whole different character when you go outside," says Boggess, who shows about 20 new works at Principle Gallery in Alexandria, Virginia, this month. "Time is pushing you,

and you constantly feel the clock is ticking by the rotation of the sun. The power of these paintings comes from working in the field. Painting indoors loses that intuitive direct contact you get from seeing that gigantic reference."

Boggess paints year-round in all seasons and says the area surrounding his home provides never-ending inspiration, including more than 150 species of trees. Boggess paints everything from water and hilltops to florals and small plants, working wet-on-wet, using cement trowels and knives as tools. His works include abstract elements and thick texture, and the prolific artist paints several works each week, building up in scale with each piece.

"When you think of a small canvas, you're really just whispering to someone," Boggess says, "but when you have something to say and want to make sure everyone hears it, you paint it big."

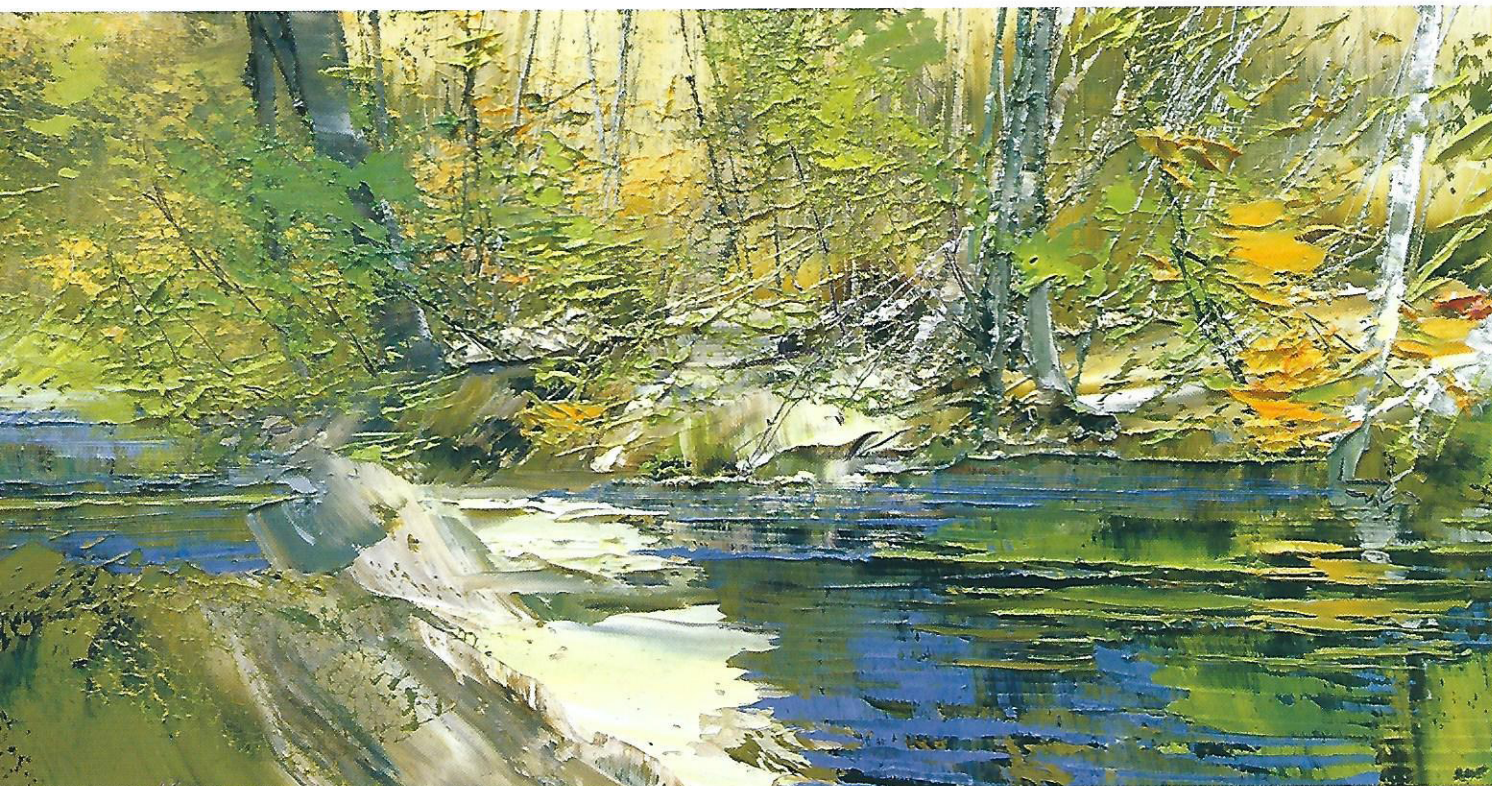
Principle Gallery's gallery assistant Pamela Sommer says the artist's ability to capture the energy and variety of the natural world never ceases to amaze, as the artist is adept at bridging the gap between representational art and elements of abstraction, achieving detail with unique mark-making.

"One aspect of his solo exhibition we at the gallery always look forward to is the reaction from the viewers," Sommer says, commenting on the artist's now 10-year representation at Principle Gallery. "Beyond the admiration of the talent and beauty of his works, there is also a sense of familiarity present in the viewer. Lynn is able to capture the outdoors in a way that speaks to the viewer and makes him or her feel as though they have been there before, provoking a fond nostalgia and a connection with the painting."

Boggess says he might introduce some



Scan for VIDEO



3

1
31 October 2015,
oil on canvas, 34 x 30"

2
16 December 2015,
oil on canvas, 46 x 40"

3
16 October 2014,
oil on canvas, 12 x 24"

4
19 December 2015,
oil on canvas, 46 x 40"

figures to his future work, painting them in with brushes, and he is also exploring a series of conceptual works made up of several separate landscape pieces to create a sense of fluidity. He also paints locations beyond his home base, such as during his recent trip down south to Florida. No matter what his future holds, he says he plans to continue depicting the natural scenes he is so passionate about.

"One thing I think is so interesting is when people say they can smell the scene in the work, that they feel like they're there," Boggess, who will do a live painting demonstration at Principle Gallery Saturday, February 20, from 1 to 4 p.m., says. "They can feel the wind, and the directness of the technique allows them to feel the freshness you feel when you're outdoors. That's the feedback I get that keeps encouraging me to keep doing what I'm doing, which I feel like is something that is real and powerful." ●



4